

# SAFETY ZONES DURING A ROCKET LAB LAUNCH

## WHEN WILL THE LAUNCH TAKE PLACE?

**Launch window: 17 March - 6 April 2019**

**Launch timing: Launch attempts will only take place between 11:30 - 15:30 NZDT.**

A launch could be postponed, or "scrubbed", multiple times due to weather or small technical modifications. As a result, we can't pinpoint the exact day or time of launch.

For up-to-date information about launch activity, visit [www.rocketlabusa.com/launch-info/launch-complex-1](http://www.rocketlabusa.com/launch-info/launch-complex-1) and follow Rocket Lab on Twitter @RocketLab.

## WHERE CAN I VIEW A LAUNCH FROM?

Wairoa District Council has allocated a public rocket launch viewing area near Nuhaka, accessible via Blucks Pit Road. Visit [www.visitwairoa.co.nz/welcome-to-wairoa/space-coast-new-zealand/](http://www.visitwairoa.co.nz/welcome-to-wairoa/space-coast-new-zealand/) for more information. Scrubs and postponements are likely during launch windows, so visitors to the Blucks Pit viewing site should anticipate multiple postponements, sometimes across several days.

## WILL THE LAUNCH BE LIVE STREAMED?

A livestream will be made available approximately 15 minutes prior to a launch attempt, notified via the Rocket Lab Twitter account. The livestream is viewable at [www.rocketlabusa.com/live-stream](http://www.rocketlabusa.com/live-stream).

## WHAT ARE THE SAFETY ZONE RESTRICTIONS?

### ROAD ACCESS

The safety zone on land is contained within the boundaries of privately-owned Onenui Station (Figure 1), including Portland Island (Waikawa). For safety reasons, only a strictly controlled group of authorised mission personnel are permitted within the safety zone during launch activities.

Temporary road closures will be in place to ensure the safety of vehicles on Māhia East Coast Road, and the unformed Tawapata Road, on launch days.

All residents will be able to access their properties, but the general public will be turned around at the closure point marked on Figure 1. Road closures and traffic management will take effect before scheduled lift-off. Road closures could be in place between 06:30 - 16:00 from Sunday 17 March - Saturday 30 March 2019.



Figure 1

### AIR ACCESS

The Civil Aviation Authority designates the appropriate special use airspace for rocket launches. The exact date and time the special use airspace becomes active will be advised via a Notice to Airmen (NOTAM).

**Restricted and Danger Areas could be in place between 11:00 - 16:05 from Sunday 17 March - Saturday 6 April 2019.**

Pilots are advised of any airspace changes at the Airways Internet Flight Information Service ([www.ifis.airways.co.nz/](http://www.ifis.airways.co.nz/)). Further details can be found in the Aeronautical Information Publication Supplement (<http://aip.net.nz/>).

The launch tracking systems can interfere with drones and potentially cause significant damage to equipment. Therefore, the use of drones is not permitted during launch activity.

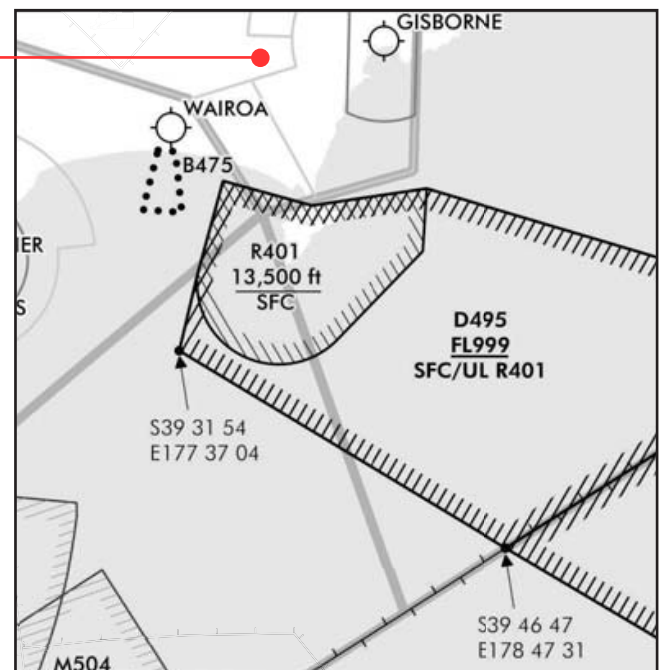


Figure 2

## MARINE ACCESS

There are safety zones in place during a launch which include an area of water around the launch site.

A Marine Safety Zone could be active between 09:30 - 16:00 from Sunday 17 March - Saturday 6 April 2019.

Check [www.rocketlab.co.nz/launch/mahia-information](http://www.rocketlab.co.nz/launch/mahia-information) to see if these zones are active, or Range Control on launch days via VHF Channel 7.

All marine safety zones are detailed in a Notice to Mariners, Coastal Navigational Warnings, and NAVAREA XIV warnings.

## MARINE SAFETY ZONE COORDINATES

- A.** 39 deg 12.50' S 177 deg 51.00' E
- B.** 39 deg 12.50' S 178 deg 11.90' E
- C.** 39 deg 19.00' S 178 deg 11.90' E
- D.** 39 deg 19.00' S 177 deg 49.00' E
- E.** 39 deg 15.00' S 177 deg 49.00' E

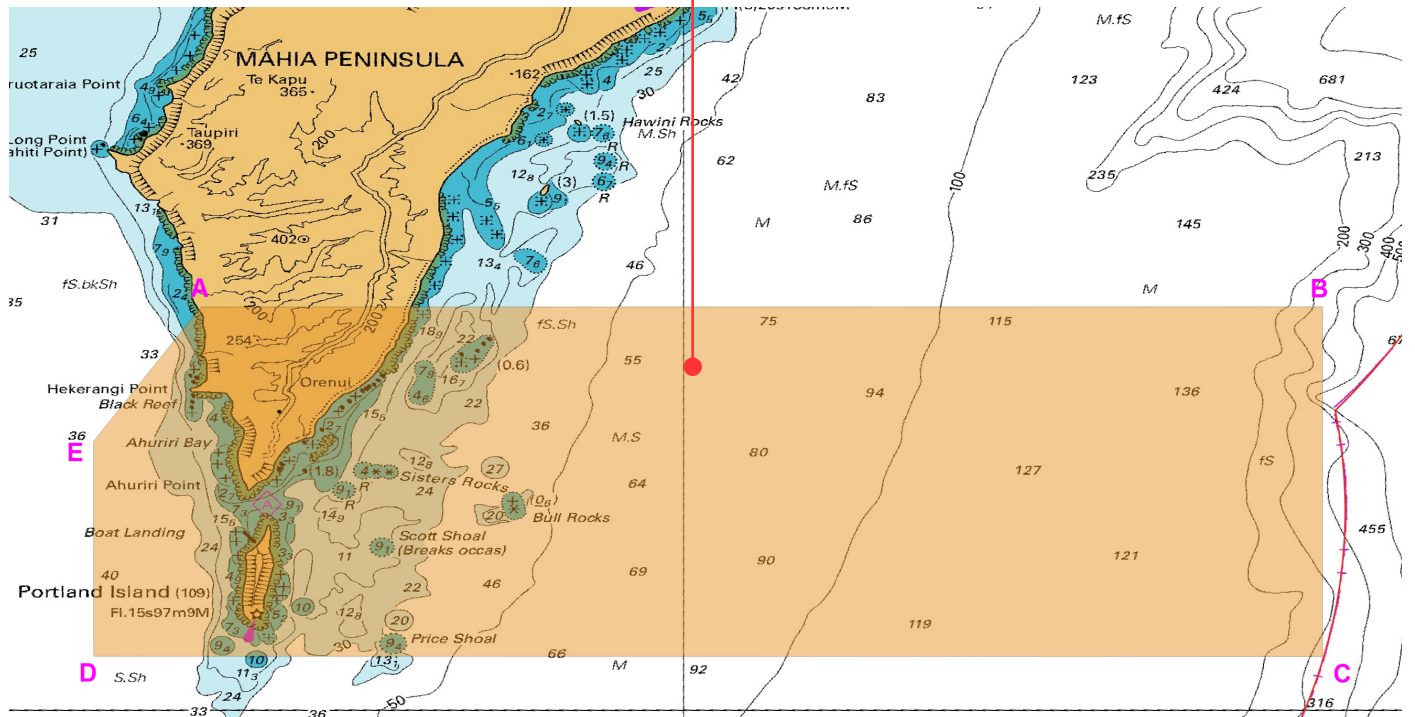


Figure 3

## HOW DO I CONTACT ROCKET LAB?

For real time launch updates, follow Rocket Lab on Twitter - @RocketLab

Listen on VHF Ch 79 for 24/7 up to date launch information.

Questions about Rocket Lab's operations are welcome via our hotline number - 0800 110 623.

Visit our website for road, air and marine access information.

[www.rocketlabusa.com/launch-info/launch-complex-1](http://www.rocketlabusa.com/launch-info/launch-complex-1) or contact our team by calling 0800 110 623.



## CONNECT WITH US

@RocketLab

facebook.com/rocketlabusa