

SAFETY ZONES DURING A ROCKET LAB LAUNCH

WHERE CAN I VIEW A LAUNCH FROM?

As Rocket Lab's top priority during the test launch is public safety, there are safety zones in place during a launch and no access will be permitted to the Onenui Station. As a result, Launch Complex 1 will not be visible during a launch from any publicly-accessible point on the Māhia Peninsula during the test window of January 20 - 28.

Waioira District Council is trialing a public rocket viewing area near Nuhaka, accessible via Blucks Pit Road. Visit www.visitwaioira.co.nz/welcome-to-waioira/space-coast-new-zealand/ for more information.

WILL THE LAUNCH BE LIVE STREAMED?

Rocket Lab will livestream launch attempts at www.rocketlab.co.nz/livestream. Due to the likelihood of postponements, a livestream will only be made available approximately 15 minutes prior to a launch attempt. The best way to receive notifications on launch activities, including scrubs and the activation of a live stream, is to follow Rocket Lab's Twitter updates @RocketLab

WHAT ARE THE SAFETY ZONE RESTRICTIONS?

ROAD ACCESS

The safety zone on land is contained within the boundaries of privately-owned Onenui Station (Figure 1), including Portland Island (Waikawa). For safety reasons, only a strictly controlled predefined group of authorised mission personnel are permitted within the safety zone during launch activities.

Temporary road closures will be in place for traffic management and to ensure the safety of vehicles on the Māhia East Coast Road, and the unformed Tawapata Road, on launch attempt days.

All residents will be able to access their properties, but the general public will be turned around at the closure point marked on Figure 1. The narrow, unsealed and winding roads are unsuited to high-levels of traffic and authorities anticipate an increase in vehicles on the Peninsula. Road closures and traffic management will take effect six hours before scheduled lift-off. Road closures **could be in place between 7:00am - 7:00 pm from Saturday 20th January - Sunday 28th January.**

WHEN WILL THE LAUNCH TAKE PLACE?

Rocket Lab will open a 9 day launch window from 20 - 28 January. Launch attempts will take place within this during a daily four hour window beginning at 2:30pm.

The launch process is complex. It's likely the launch could be postponed, or "scrubbed", multiple times to allow for small, technical modifications. Weather can also cause scrubs - winds and heavy rain will likely result in a postponement. As a result, we can't pin point the day or time of launch. Rocket Lab will announce the decision to scrub a launch as soon as possible but this could be as late as 0.1 seconds before lift-off.



Figure 1

AIR ACCESS

In order to facilitate the safety of air navigation during a launch, temporary Restricted and Danger Areas are prescribed surrounding the launch area. The Civil Aviation Authority designates the appropriate special use airspace that is used for events such as the Rocket Lab launch. The exact date and time the special use airspace becomes active will be advised via a Notice to Airmen (NOTAM).

Restricted and Danger Areas **could be in place between 12:30pm - 7:00pm from Saturday 20th January - Sunday 28th January.**

Pilots are advised of any airspace changes at the Airways Internet Flight Information Service. Further details can be found in the Aeronautical Information Publication Supplement.

The temporary restrictions also apply to drones. The launch tracking systems can interfere with drone systems and potentially cause significant damage to equipment. Therefore, we ask that all members of the public refrain from the use of drones.

Pilots are advised of any airspace changes at the Airways Internet Flight Information Service (www.ifs.airways.co.nz/). Further details can be found in the Aeronautical Information Publication Supplement (<http://aip.net.nz/>).

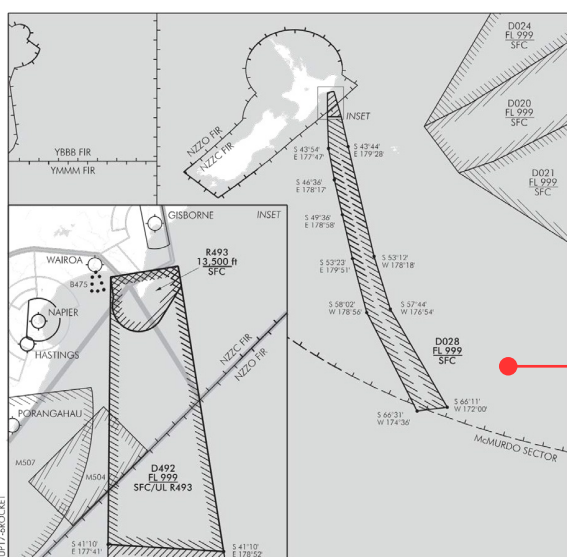


Figure 2

MARINE ACCESS

As Rocket Lab's top priority during launch is public safety, there are safety zones in place during a launch which include an area of water around the launch site. These zones are a precautionary measure to ensure the safety of the public in the event of a launch accident.

A Marine Safety Zone could be active between 12:30pm - 7:00pm from Saturday 20th January - Sunday 28th January.

Please continue to check www.rocketlab.co.nz/mahia to see if these zones are active, or feel free to contact our team by calling 0800 110 623.

Range Control can be contacted on days of operation on VHF Channel 7.

All marine safety zones are detailed in a Notice to Mariners (NZ 22(T)/18), Coastal Navigational Warnings, and NAVAREA XIV warnings.

**MARINE
SAFETY
ZONE
COORDINATES**

- 39° 13'.28S., 177° 47'.00E.
- 39° 13'.28S., 177° 51'.06E.
- 39° 13'.08S., 177° 52'.68E.
- 39° 11'.42S., 177° 55'.46E.
- 39° 11'.80S., 177° 58'.00E.
- 39° 19'.00S., 178° 05'.00E.
- 40° 14'.65S., 178° 04'.62E.
- 40° 14'.93S., 177° 59'.56E.

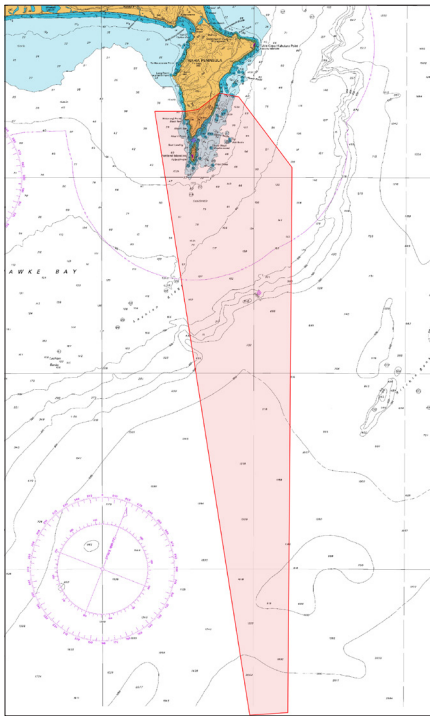


Figure 3

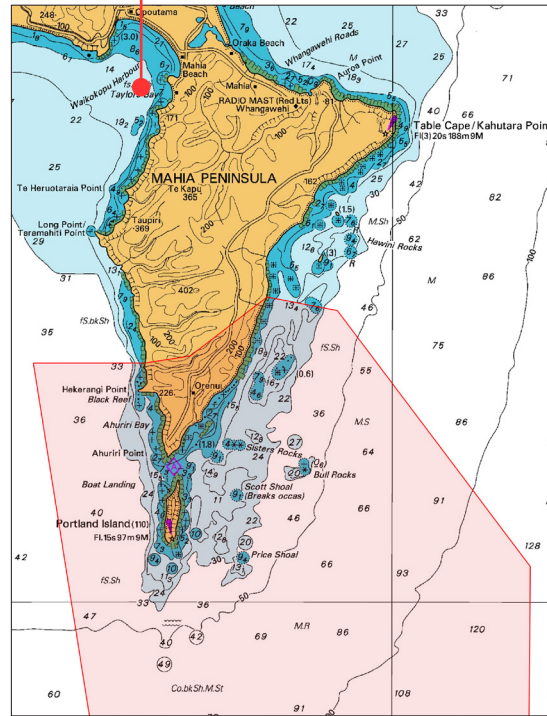


Figure 4

HOW DO I CONTACT ROCKET LAB?

For real time updates regarding the launch, we recommend following the Rocket Lab Twitter page - @RocketLab

Any questions about Rocket Lab's operations are welcome via our hotline number - 0800 110 623.

For the latest, and most specific, updates around road, air and marine access please visit www.rocketlab.co.nz/launch/mahia-information/ or contact our team by calling 0800 110 623.

CONNECT WITH US

- @RocketLab
- facebook.com/rocketlabusa