

# SAFETY ZONES DURING A ROCKET LAB LAUNCH

## WHEN WILL THE LAUNCH TAKE PLACE?

**Launch window: 11 November - 19 November 2018**

**Launch timing: Launch attempts will only take place between 16:00 - 20:00 NZDT (4:00 - 8:00 pm).**

The launch process is complex. A launch could be postponed, or "scrubbed", multiple times to allow for small, technical modifications. Weather can also cause scrubs - winds and heavy rain will likely result in a postponement. As a result, we can't pin point the day or time of launch within this window.

For up-to-date information about launch activity, visit [www.rocketlabusa.com/launch-info/launch-complex-1](http://www.rocketlabusa.com/launch-info/launch-complex-1) and follow Rocket Lab on Twitter @RocketLab.

## WHAT ARE THE SAFETY ZONE RESTRICTIONS?

### ROAD ACCESS

The safety zone on land is contained within the boundaries of privately-owned Onenui Station (Figure 1), including Portland Island (Waikawa). For safety reasons, only a strictly controlled predefined group of authorised mission personnel are permitted within the safety zone during launch activities.

Temporary road closures will be in place for traffic management and to ensure the safety of vehicles on the Māhia East Coast Road, and the unformed Tawapata Road, on launch attempt days.

All residents will be able to access their properties, but the general public will be turned around at the closure point marked on Figure 1. The narrow, unsealed and winding roads are unsuited to high-levels of traffic and authorities anticipate an increase in vehicles on the Peninsula. Road closures and traffic management will take effect before scheduled lift-off. Road closures could be in place between 10:30 - 20:30 from Sunday 11 November - Monday 19 November 2018.

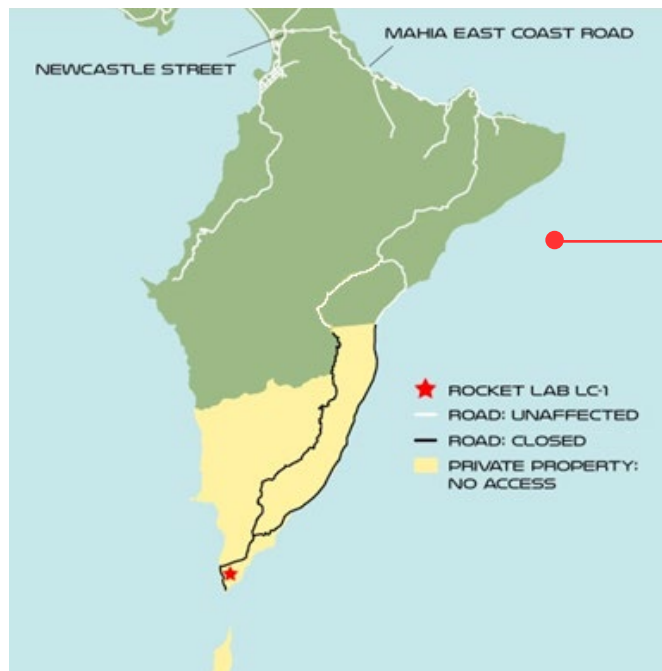


Figure 1

## WHERE CAN I VIEW A LAUNCH FROM?

As Rocket Lab's top priority during the test launch is public safety, there are safety zones in place during a launch and no access will be permitted to the Onenui Station. As a result, Launch Complex 1 will not be visible during a launch from any publicly-accessible point on the Māhia Peninsula during the window of 11 November - 19 November.

Wairoa District Council has allocated a rocket launch viewing area for the public near Nuhaka, accessible via Blucks Pit Road. Visit [www.visitwairoa.co.nz/welcome-to-wairoa/space-coast-new-zealand/](http://www.visitwairoa.co.nz/welcome-to-wairoa/space-coast-new-zealand/) for more information. Scrubs and postponements are likely during launch windows, so visitors to the Blucks Pit viewing site should anticipate multiple postponements, sometimes across several days.

## WILL THE LAUNCH BE LIVE STREAMED?

Due to the likelihood of postponed or scrubbed launches, Rocket Lab recommends viewing a launch via Rocket Lab's video livestream. This offers the best views of launch and includes helpful commentary about the launch process. A livestream will be made available approximately 15 minutes prior to a launch attempt, notified via the Rocket Lab Twitter account. The livestream is viewable on a launch day at [www.rocketlabusa.com/live-stream](http://www.rocketlabusa.com/live-stream) and Rocket Lab's YouTube channel.

### AIR ACCESS

In order to facilitate the safety of air navigation during a launch, temporary Restricted and Danger Areas are prescribed surrounding the launch area. The Civil Aviation Authority designates the appropriate special use airspace that is used for events such as the Rocket Lab launch. The exact date and time the special use airspace becomes active will be advised via a Notice to Airmen (NOTAM).

Restricted and Danger Areas could be in place between 15:30 - 20:30 from Sunday 11 November - Monday 19 November 2018.

The launch tracking systems can interfere with drone systems and potentially cause significant damage to equipment. Therefore, we ask that all members of the public refrain from the use of drones.

Pilots are advised of any airspace changes at the Airways Internet Flight Information Service ([www.ifis.airways.co.nz/](http://www.ifis.airways.co.nz/)). Further details can be found in the Aeronautical Information Publication Supplement (<http://aip.net.nz/>).

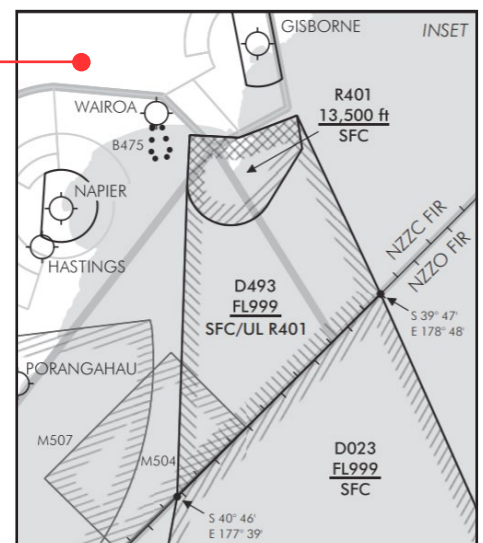


Figure 2

## MARINE ACCESS

As Rocket Lab's top priority during launch is public safety, there are safety zones in place during a launch which include an area of water around the launch site. These zones are a precautionary measure to ensure the safety of the public during launch operations.

A Marine Safety Zone **could be active between 14:00 - 20:30 from Sunday 11 November - Monday 19 November 2018.**

Please continue to check [www.rocketlab.co.nz/launch/mahia-information](http://www.rocketlab.co.nz/launch/mahia-information) to see if these zones are active, or feel free to contact our team by calling 0800 110 623.

Range Control can be contacted on days of operation on VHF Channel 7.

All marine safety zones are detailed in a Notice to Mariners, Costal Navigational Warnings, and NAVAREA XIV warnings.

## MARINE SAFETY ZONE COORDINATES

39° 11.24' S	177° 55.25' E (East beach)
39° 11.24' S	178° 00' E
39° 51' S	178° 00' E
39° 51' S	177° 47' E
39° 14' S	177° 47' E
39° 14' S	177° 49' E
39° 13 S	177° 51.09' E (West beach)

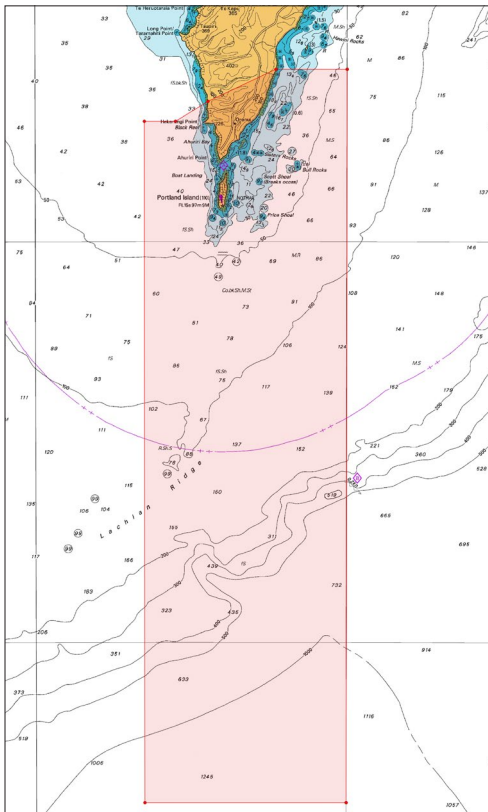


Figure 3

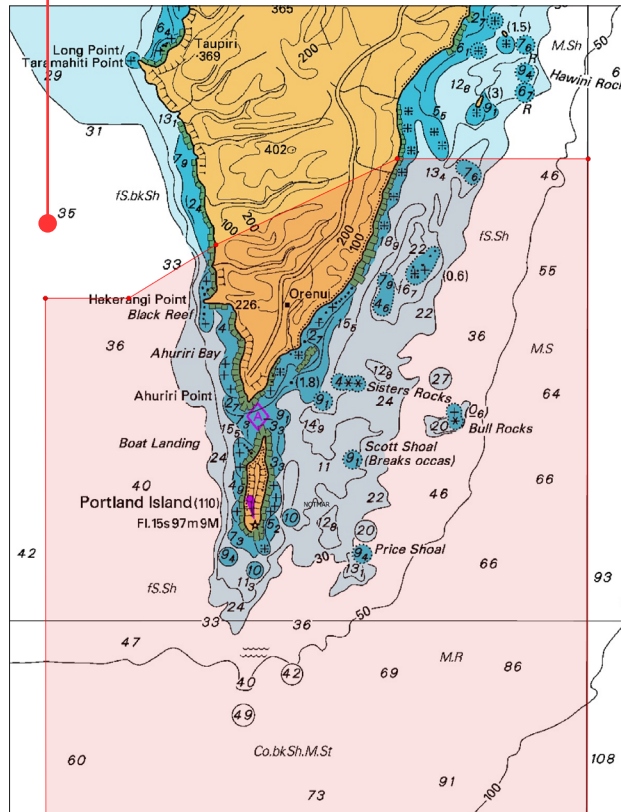


Figure 4

## HOW DO I CONTACT ROCKET LAB?

For real time updates regarding the launch, we recommend following the Rocket Lab Twitter page - @RocketLab

Any questions about Rocket Lab's operations are welcome via our hotline number - 0800 110 623.

For the latest, and most specific, updates around road, air and marine access please visit [www.rocketlabusa.com/launch-info/launch-complex-1](http://www.rocketlabusa.com/launch-info/launch-complex-1) or contact our team by calling 0800 110 623.



## CONNECT WITH US

@RocketLab

facebook.com/rocketlabusa