

# ROCKET LAB LAUNCH INFORMATION

## WHEN WILL THE LAUNCH TAKE PLACE?

**Launch window:** 15 October – 28 October 2019

**Launch timing:** 12:00 – 16:00 NZDT

## WATCH THE LIVESTREAM

[www.rocketlabusa.com/live-stream](http://www.rocketlabusa.com/live-stream).

## WHAT ARE THE SAFETY ZONE RESTRICTIONS?

### ROAD ACCESS

The safety zone on land is contained within the boundaries of privately-owned Onenui Station (Figure 1), including Portland Island (Waikawa). For safety reasons, only a strictly controlled group of authorised mission personnel are permitted within the safety zone during launch activities.

Temporary road closures will be in place to ensure the safety of vehicles on Māhia East Coast Road, and the unformed Tawapata Road, on launch days.

All residents will be able to access their properties, but the general public will be turned around at the closure point marked on Figure 1. Road closures and traffic management will take effect before scheduled lift-off. **Road closures could be in place between 06:30 – 16:30 from Tuesday 15 October 2019.**

### AIR ACCESS

Air space is restricted over the launch site and the rocket's projected flight path on launch days.

The exact date and time that the special use airspace becomes active will be advised via a Notice to Airmen (NOTAM). Pilots are advised of any airspace changes via the Airways Internet Flight Information Service ([www.ifis.airways.co.nz](http://www.ifis.airways.co.nz))

The use of drones is not permitted during launch activity. The launch tracking systems can interfere with drones and cause them significant damage.

### MARINE ACCESS

A Marine Safety Zone may be active from **09:55 - 16:30 from Tuesday 15 October – Monday 28 October.**

Vessels are not permitted in the safety zone at this time.

Check [www.rocketlab.co.nz/launch/mahia-information](http://www.rocketlab.co.nz/launch/mahia-information) to see if these zones are active, or Range Control on launch days via VHF Channel 7.

The Marine Safety Zone is detailed in NZ Notice to Mariners, Coastal Navigational Warnings and NAVAREA XIV Warnings.

Listen VHF Channel 79 for 24/7 up-to-date Range Information Broadcast.

### MARINE SAFETY ZONE COORDINATES

- A. 39°14.00' S 177°50.80' E
- B. 39°14.00' S 177°54.00' E
- C. 39°16.50' S 177°58.00' E
- D. 39°29.00' S 177°58.00' E
- E. 39°29.00' S 177°50.00' E
- F. 39°15.00' S 177°50.00' E

## WHERE CAN I VIEW A LAUNCH FROM?

Wairoa District Council has allocated a public rocket launch viewing area near Nuhaka, accessible via Blucks Pit Road.

Visit [www.visitwairoa.co.nz/welcome-to-wairoa/space-coast-new-zealand/](http://www.visitwairoa.co.nz/welcome-to-wairoa/space-coast-new-zealand/) for more information.

Scrubs and postponements are likely during launch windows, so visitors to the Blucks Pit viewing site should anticipate multiple postponements, sometimes across several days

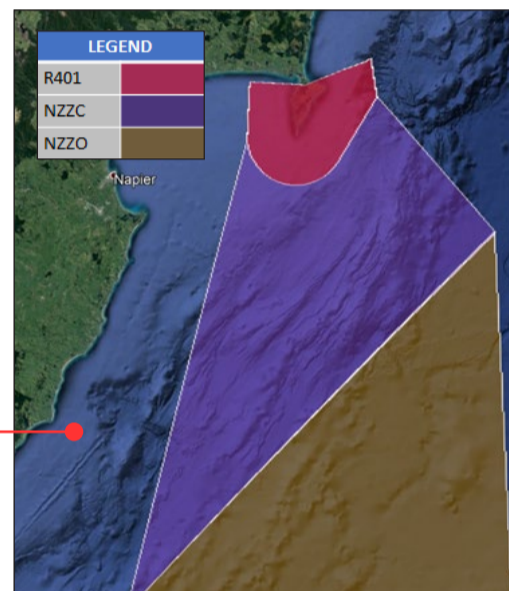


Figure 2

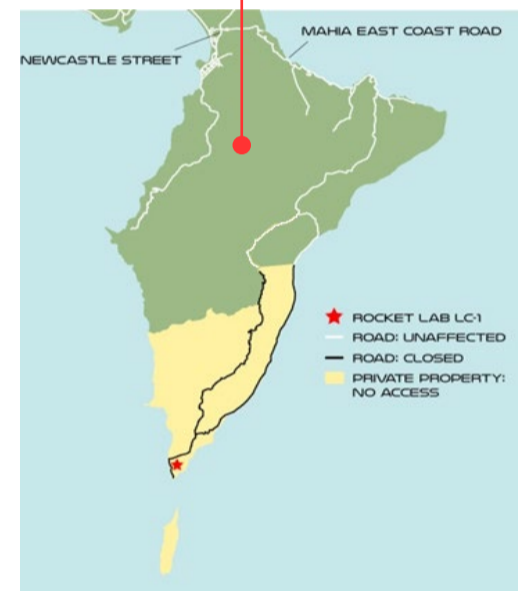


Figure 1

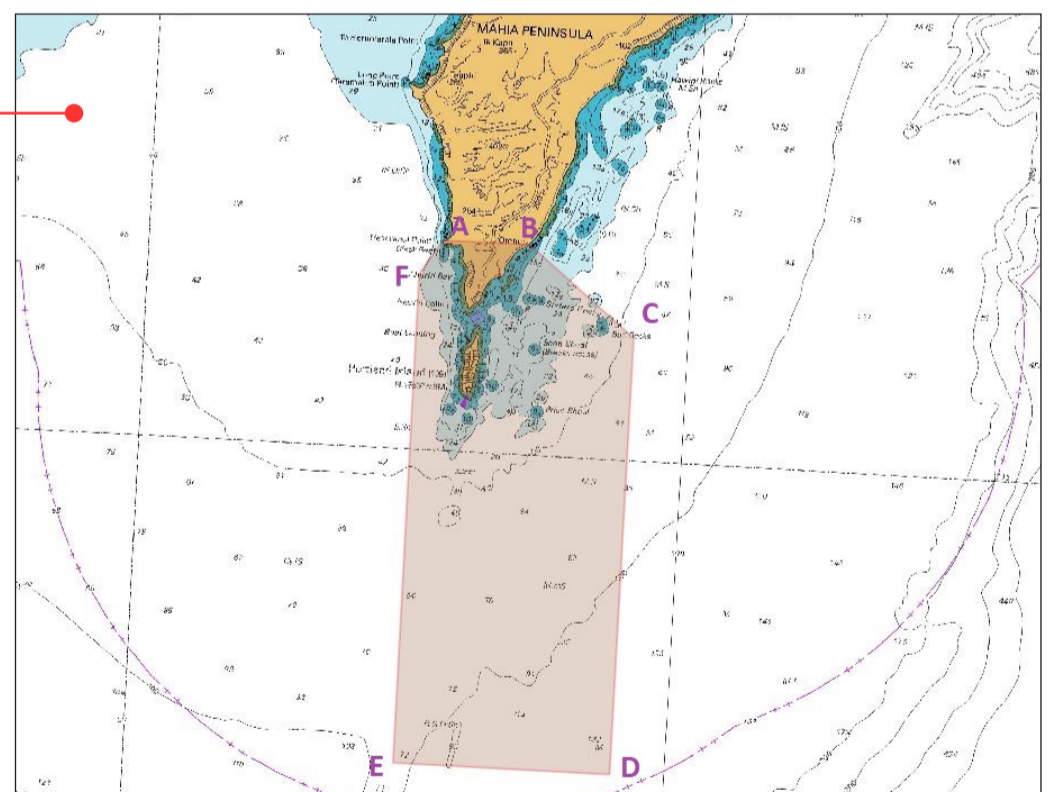


Figure 3

## CONTACT ROCKET LAB

- For real time launch updates, follow Rocket Lab on Twitter [@RocketLab](https://twitter.com/RocketLab)
- Listen on VHF Ch 79 when on the water

- Call us on 0800 110 623.
- Visit our website for road, air and marine access information. [www.rocketlabusa.com/launch-info/launch-complex-1](http://www.rocketlabusa.com/launch-info/launch-complex-1)

