

ROCKET LAB LAUNCH INFORMATION

WHEN WILL THE LAUNCH TAKE PLACE?

Launch window: 17 August - 30 August 2019

Launch timing: The launch window will be approx. 1hr 40 mins each day

This table outlines the target launch timing for each day of the full 15 day launch window.

Window open (NZST)	Window open (NZST)
DAY 1 2019-08-17 00:57	DAY 9 2019-08-24 12:32
DAY 2 2019-08-18 00:32	DAY 10 2019-08-25 12:06
DAY 3 2019-08-19 00:06	DAY 11 2019-08-26 11:40
DAY 4 2019-08-19 23:40	DAY 12 2019-08-27 11:15
DAY 5 2019-08-20 23:15	DAY 13 2019-08-28 10:49
DAY 6 2019-08-21 22:49	DAY 14 2019-08-29 10:23
DAY 7 2019-08-22 22:23	DAY 15 2019-08-30 18:58
DAY 8 2019-08-23 12:57	

WHAT ARE THE SAFETY ZONE RESTRICTIONS?

ROAD ACCESS

The safety zone on land is contained within the boundaries of privately-owned Onenui Station (Figure 1), including Portland Island (Waikawa). For safety reasons, only a strictly controlled group of authorised mission personnel are permitted within the safety zone during launch activities.

Temporary road closures will be in place to ensure the safety of vehicles on Māhia East Coast Road, and the unformed Tawapata Road, on launch days.

All residents will be able to access their properties, but the general public will be turned around at the closure point marked on Figure 1. Road closures and traffic management will take effect before scheduled lift-off. **Road closures could be in place between 13:28 - 03:07 from 16 - 30 August.**

AIR ACCESS

Air space is restricted over the launch site and the rocket's projected flight path on launch days.

The exact date and time of the special use airspace becomes active will be advised via a Notice to Airmen (NOTAM). Pilots are advised of any airspace changes via the Airways Internet Flight Information Service (www.ifis.airways.co.nz)

The use of drones is not permitted during launch activity. The launch tracking systems can interfere with drones and cause them significant damage.

MARINE ACCESS

A Marine Safety Zone will be active from **TWO HOURS BEFORE** the launch window opening, until **THIRTY MINUTES AFTER** a successful launch.

Vessels are not permitted in the safety zone at this time.

Check www.rocketlab.co.nz/launch/mahia-information to see if these zones are active, or Range Control on launch days via VHF Channel 7.

The Marine Safety Zone is detailed in NZ Notice to Mariners Edition 16, Coastal Navigational Warnings and NAVAREA XIV Warnings.

Listen VHF Channel 79 for 24/7 up-to-date Range Information Broadcast.

MARINE SAFETY ZONE COORDINATES

- A. 39°14.00' S 177°51.00' E
- B. 39°12.00' S 177°55.00' E
- C. 39°20.00' S 178°11.50' E
- D. 39°25.00' S 178°07.00' E
- E. 39°16.30' S 177°49.00' E

CONTACT ROCKET LAB

- For real time launch updates, follow Rocket Lab on Twitter
@RocketLab
- Listen on VHF Ch 79 when on the water

- Call us on 0800 110 623.
- Visit our website for road, air and marine access information.
www.rocketlabusa.com/launch-info/launch-complex-1

WHERE CAN I VIEW A LAUNCH FROM?

Wairoa District Council has allocated a public rocket launch viewing area near Nuhaka, accessible via Blucks Pit Road.

Visit www.visitwairoa.co.nz/welcome-to-wairoa/space-coast-new-zealand/ for more information.

Scrubs and postponements are likely during launch windows, so visitors to the Blucks Pit viewing site should anticipate multiple postponements, sometimes across several days

WATCH THE LIVESTREAM

www.rocketlabusa.com/live-stream.

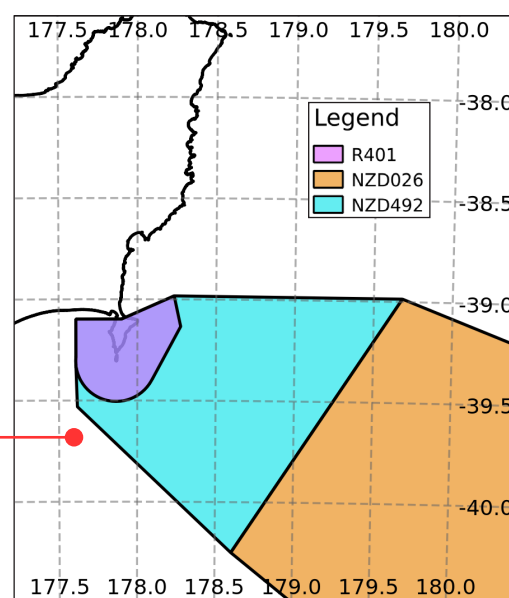


Figure 2



Figure 1

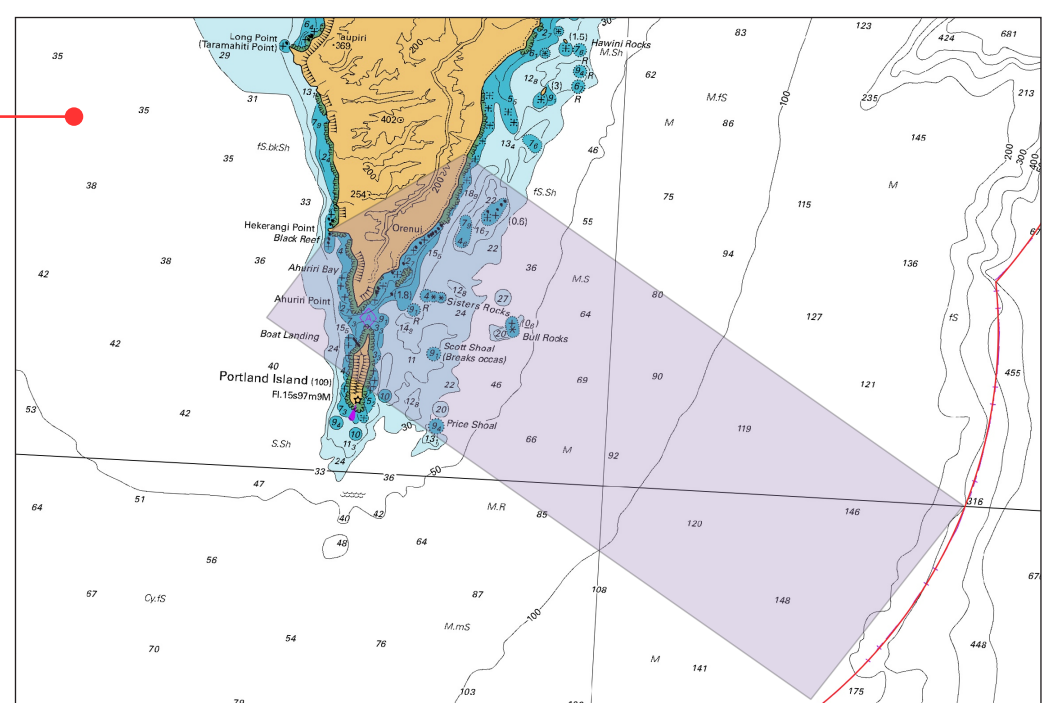


Figure 3

