

LAUNCH 18 ANOTHER ONE LEAVES THE CRUST


LAUNCH WINDOW:
16-25 JANUARY, 2021

LAUNCH TIMING:
08:30 PM – 08:50 PM

Launch can take place on any day within this window.

WHERE ARE THE SAFETY ZONE RESTRICTIONS?

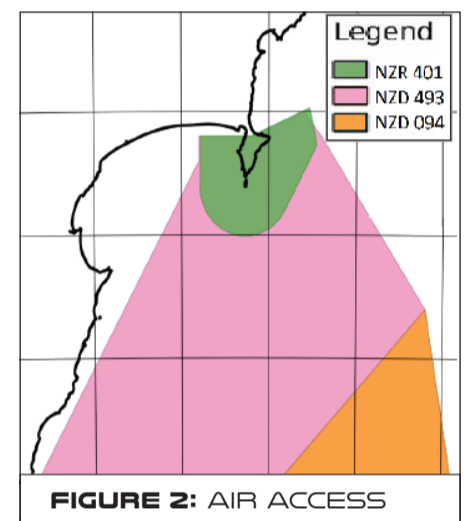
ROAD ACCESS (SEE FIG. 1)

 **Road closures will be in place from:
4:30 pm - 9:15 pm, Saturday 16 January**


(If launch is delayed, road closures will be in place on subsequent days in the launch window)

The safety zone on land is within the boundaries of privately-owned Onenui Station, including Portland Island (Waikawa). For safety reasons, there is no public access to the launch site.

Temporary road closures will be in place to ensure the safety of vehicles on Māhia East Coast Road, and the unformed Tawapata Road, on launch days. All residents will be able to access their properties, but the public will be turned around at the closure point marked on Figure 1.




AIR ACCESS (SEE FIG. 2)

 **Air space closures will be in place from:
08:00 pm – 09:25 pm NZT, Saturday 16 January**

(If launch is delayed, airspace closures will be in place on subsequent days in the launch window)

Air space is restricted over the launch site and the rocket's projected flight path on launch days. The special use airspace is advised via a Notice to Airmen (NOTAM). Pilots are advised of any airspace changes via the Airways Internet Flight Information Service (www.ifis.airways.co.nz) The use of drones is not permitted during launch activity.

MARINE ACCESS (SEE FIG. 3)

 **A Marine Safety Zone will be active from:
06:30 pm – 09:20 pm, Saturday 16 January**

(If launch is delayed, marine closures will be in place on subsequent days in the launch window)

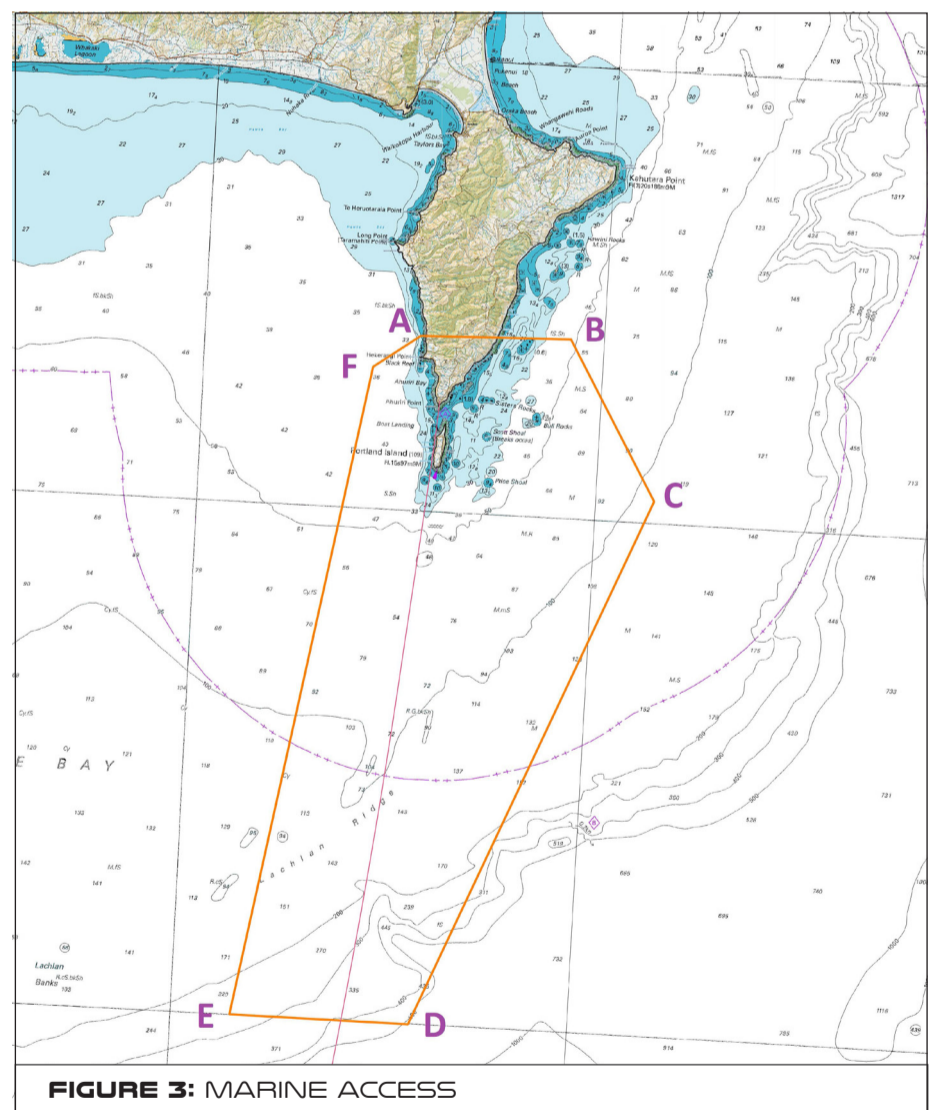
Vessels are not permitted in the safety zone at this time. Any vessels planning to cross the area indicated in the map are asked to contact Rocket Lab Range Control on VHF Channel 7 or Channel 16.

- Check www.rocketlab.co.nz/launch/mahia-information to see if these zones are active
- Listen VHF Channel 79 for 24/7 up-to-date Range Information Broadcast.
- Contact Range Control on launch days via VHF Channel 7
- Launch safety information is detailed in NZ Annual Notices to Mariners Ch 19.

The Marine Safety Zone is detailed in General NZ Notice to Mariners, Coastal Navigational Warnings and NAVAREA XIV Warnings.

Marine Safety Coordinates

A. 39°13.20' S 177°50.80' E D. 39°40.01' S 177°52.01' E
B. 39°13.02' S 177°58.32' E E. 39°40.00' S 177°43.00' E
C. 39°19.15' S 178°02.93' E F. 39°14.50' S 177°48.50' E



WATCHING A LAUNCH

Wairoa District Council has allocated a public rocket launch viewing area near Nuhaka, accessible via Blucks Pit Road. Visit: www.visitwairoa.co.nz/welcome-to-wairoa/space-coast-new-zealand/ for more information.

Watch the livestream: rocketlabusa.com/live-stream

CONTACT

- For real time launch updates, follow Rocket Lab on Twitter [@RocketLab](https://twitter.com/RocketLab)
- Listen on VHF Ch 79 when on the water
- Call us on 0800 110 623.

