

LAUNCH INFORMATION

F41



PRIMARY LAUNCH DAY: TUESDAY 19TH SEPT. 2023
BACKUP LAUNCH DAYS: 20TH SEPT. – 02ND OCT. 2023
THE 14-DAY LAUNCH WINDOW IS OPEN: ALL TIMES IN NZT



Window Open	Window Closed
19 Sept 2023 18:30 NZST	19 Sept 2023 20:30 NZST
20 Sept 2023 18:00 NZST	20 Sept 2023 20:15 NZST
21 Sept 2023 17:45 NZST	21 Sept 2023 20:00 NZST
22 Sept 2023 17:30 NZST	22 Sept 2023 19:30 NZST
23 Sept 2023 17:00 NZST	23 Sept 2023 19:15 NZST
24 Sept 2023 17:45 NZDT	24 Sept 2023 19:45 NZDT
25 Sept 2023 17:15 NZDT	25 Sept 2023 19:30 NZDT

Window Open	Window Closed
26 Sept 2023 17:00 NZDT	26 Sept 2023 19:15 NZDT
27 Sept 2023 16:45 NZDT	27 Sept 2023 18:45 NZDT
28 Sept 2023 16:15 NZDT	28 Sept 2023 18:30 NZDT
29 Sept 2023 16:00 NZDT	29 Sept 2023 18:00 NZDT
30 Sept 2023 15:30 NZDT	30 Sept 2023 17:45 NZDT
01 Oct 2023 15:15 NZDT	01 Oct 2023 17:30 NZDT
02 Oct 2023 15:00 NZDT	02 Oct 2023 17:00 NZDT

SAFETY ZONES

Will only be active on a launch attempt day
 Land safety zones (See Fig. 1)

**Road closures will be in place from:
 6hrs before until 30 min after the launch window closes**

The safety zone on land is within the boundaries of privately-owned Onenui Station, including Portland Island (Waikawa). There is no public access to the launch site. Temporary road closures will be in place on Mahia East Coast Road, and the unformed Tawapata Road, on launch days. All residents will be able to access their properties, but the public will be turned around at the closure point marked on Figure 1.

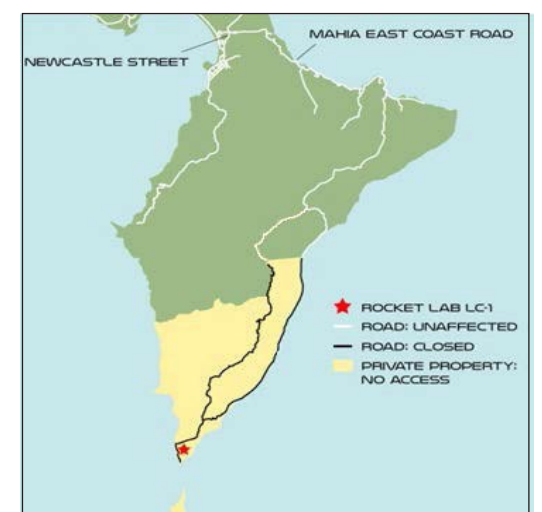


FIGURE 1: ROAD ACCESS

Airspace safety zones (See Fig. 2)

**Air space closures will be in place from:
 30min before until 35min after the launch window closes**

Air space is restricted over the launch site and the rocket's projected flight path on launch days. Special use airspace in relation to the launch is disseminated via NOTAM. The use of drones is not permitted during launch activity.

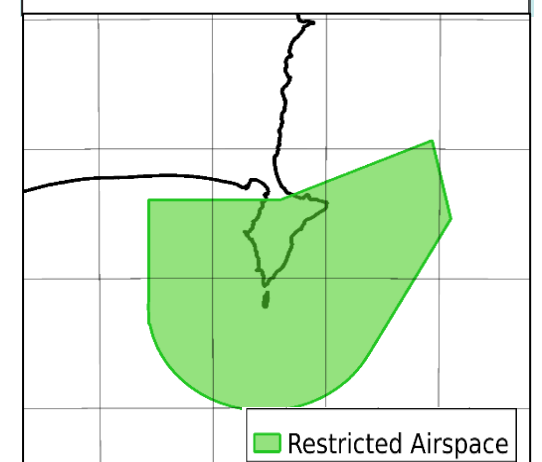


FIGURE 2: AIR ACCESS

Marine safety zones (See Fig. 3)

**A Marine Safety Zone will be active from:
 2hrs before until 30 min after the launch window closes**

Vessels are not permitted in the safety zone when active. Any vessels wishing to cross the area indicated on the map are asked to contact Rocket Lab Range Control on VHF Channel 07 or Channel 16. VHF Channel 79 broadcasts up-to-date information 24/7 on the status of the Marine Safety Zone. The Marine Safety Zone is detailed in Coastal Navigational Warnings and NAVAREA XIV Warnings. Launch safety information is also detailed in NZ Annual Notices to Mariners Ch19.

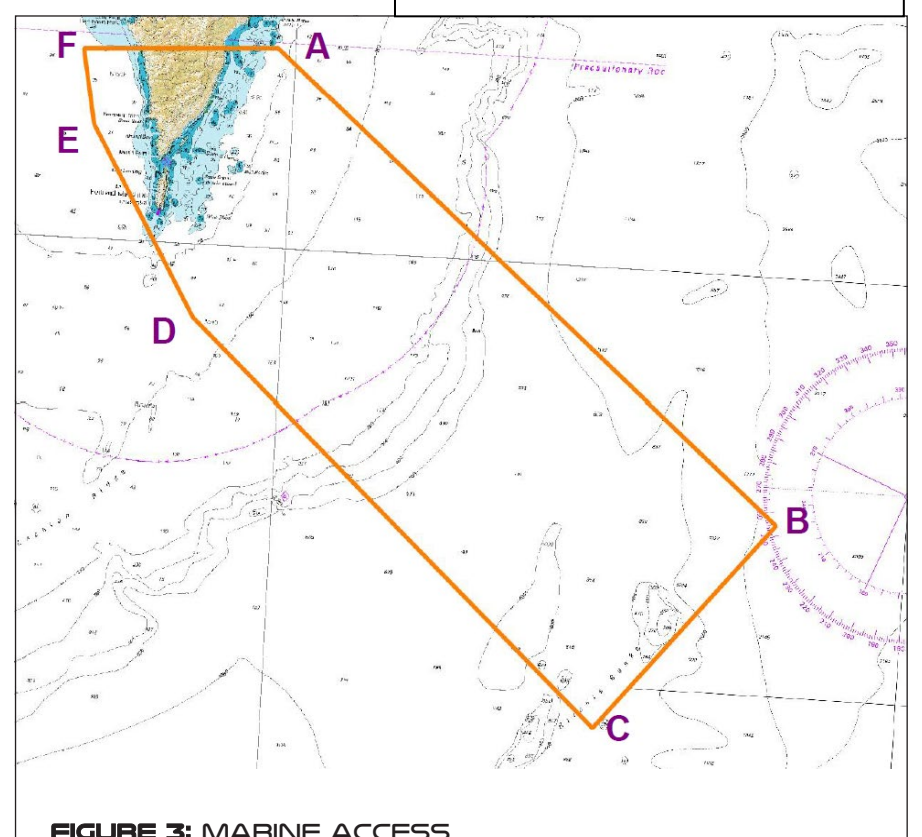


FIGURE 3: MARINE ACCESS

A	39°10.41" S	177°58.86" E
B	39°31.80" S	178°31.80" E
C	39°42.00" S	178°21.00" E
D	39°23.51" S	177°54.41" E
E	39°14.53" S	177°47.59" E
F	39°10.92" S	177°46.70" E

WATCH THE LIVESTREAM: [ROCKETLABUSA.COM/LIVE-STREAM](https://rocketlabusa.com/live-stream)

FOLLOW US ON TWITTER: @ROCKETLAB CALL US ON 0800 110 623.