

LAUNCH INFORMATION

F32



PRIMARY LAUNCH DAY: SATURDAY 5TH NOV. 2022

BACKUP LAUNCH DAYS: 06TH NOV – 18TH NOV. 2022

THE 14-DAY LAUNCH WINDOW IS OPEN:

05TH - 18TH NOV: 0615-0730 NZST



SAFETY ZONES

Will only be active on a launch attempt day

Land safety zones (See Fig. 1)

Road closures will be in place from:
6hrs before until 30 min after the launch window closes

The safety zone on land is within the boundaries of privately-owned Onenui Station, including Portland Island (Waikawa). There is no public access to the launch site. Temporary road closures will be in place on Mahia East Coast Road, and the unformed Tawapata Road, on launch days. All residents will be able to access their properties, but the public will be turned around at the closure point marked on Figure 1.

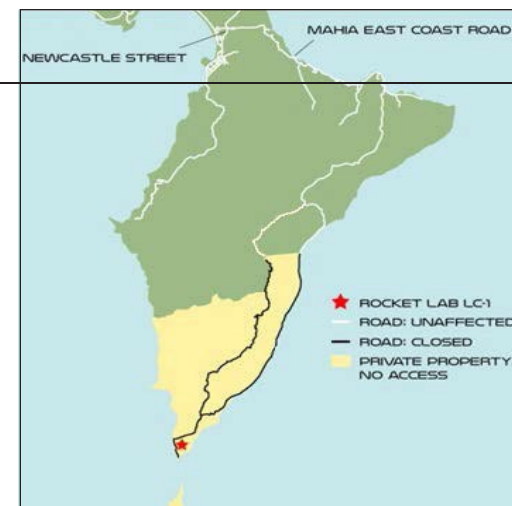


FIGURE 1: ROAD ACCESS

Airspace safety zones (See Fig. 2)

Air space closures will be in place from:
30min before until 35min after the launch window closes

Air space is restricted over the launch site and the rocket's projected flight path on launch days. Special use airspace in relation to the launch is disseminated via NOTAM. The use of drones is not permitted during launch activity.

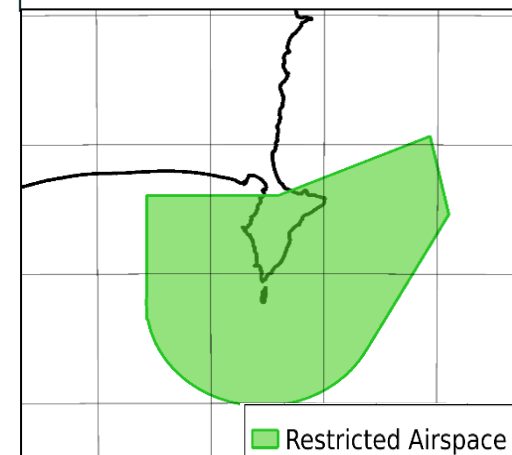


FIGURE 2: AIR ACCESS

Marine safety zones (See Fig. 3)

A Marine Safety Zone will be active from:
2hrs before until 30 min after the launch window closes

Vessels are not permitted in the safety zone when active. Any vessels wishing to cross the area indicated on the map are asked to contact Rocket Lab Range Control on VHF Channel 7 or Channel 16. VHF Channel 79 broadcasts up-to-date information 24/7 on the status of the Marine Safety Zone. The Marine Safety Zone is detailed in Coastal Navigational Warnings and NAVAREA XIV Warnings. Launch safety information is also detailed in NZ Annual Notices to Mariners Ch19.

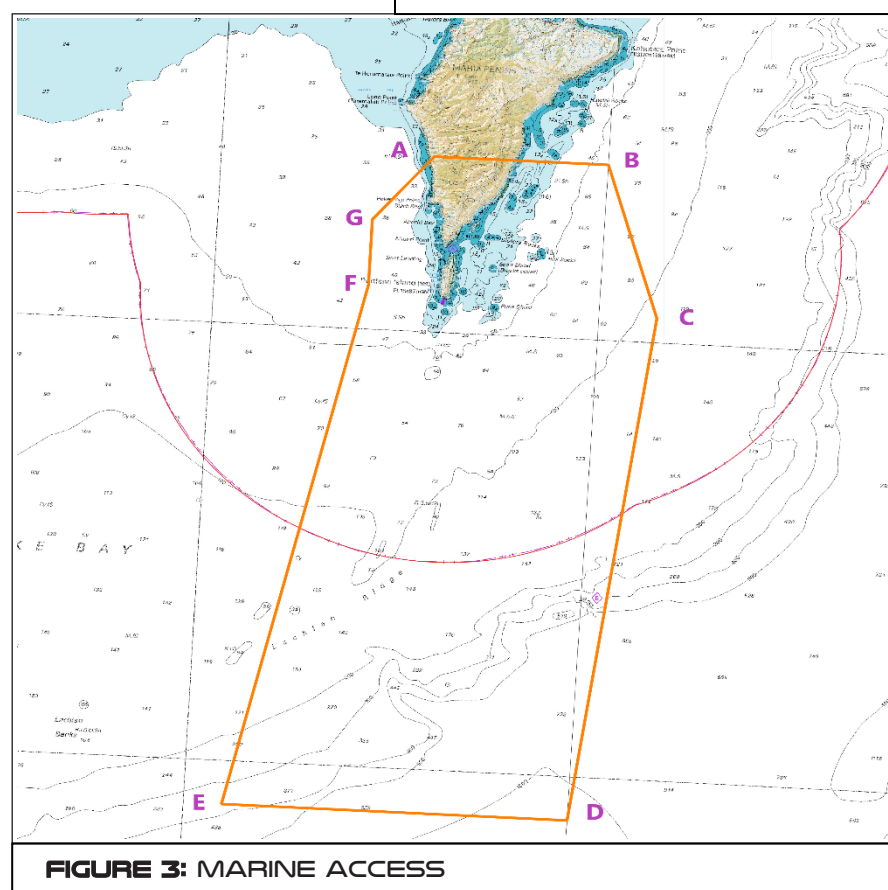


FIGURE 3: MARINE ACCESS

A	39° 12' 00.00" S	177° 51' 00.00" E
B	39° 12' 00.00" S	178° 00' 00.00" E
C	39° 18' 00.00" S	178° 03' 00.00" E
D	39° 42' 00.00" S	177° 00' 00.00" E
E	39° 42' 00.00" S	177° 42' 00.00" E
F	39° 18' 00.00" S	177° 48' 00.00" E
G	39° 15' 00.00" S	177° 48' 00.00" E

WATCH THE LIVESTREAM: [ROCKETLABUSA.COM/LIVE-STREAM](https://rocketlabusa.com/live-stream)
FOLLOW US ON TWITTER: @ROCKETLAB CALL US ON 0800 110 623.