



# ROCKET LAB LAUNCH INFORMATION

## WHEN WILL THE LAUNCH TAKE PLACE?

**Launch window:** 27 March – 09 April 2020

**Launch timing:** Launch window from 17:43 - 19:33 NZDT

from 27/03/2020 to 04/04/2020. Due to New Zealand daylight saving time ending on 05/04/2020, launch window from 16:43 to 18:33 NZST from 05/04/2020 to 10/04/2020.

For up-to-date information about launch activity, visit [rocketlabusa.com/missions/next-mission](http://rocketlabusa.com/missions/next-mission) and follow Rocket Lab on Twitter @RocketLab

## WHAT ARE THE SAFETY ZONE RESTRICTIONS?

### ROAD ACCESS

The safety zone on land is contained within the boundaries of privately-owned Onenui Station (Figure 1), including Portland Island (Waikawa). For safety reasons, only a strictly controlled group of authorised mission personnel are permitted within the safety zone during launch activities.

Temporary road closures will be in place to ensure the safety of vehicles on Māhia East Coast Road, and the unformed Tawapata Road, on launch days.

All residents will be able to access their properties, but the general public will be turned around at the closure point marked on Figure 1. Road closures could be in place between 11:43 – 20:00 from Friday 27 March 2020 and on subsequent days in the launch window.

### AIR ACCESS

Air space is restricted over the launch site and the rocket's projected flight path on launch days.

The exact date and time of the special use airspace becomes active will be advised via a Notice to Airmen (NOTAM). Pilots are advised of any airspace changes via the Airways Internet Flight Information Service ([www.ifis.airways.co.nz](http://www.ifis.airways.co.nz))

The use of drones is not permitted during launch activity. The launch tracking systems can interfere with drones and cause them significant damage.

### MARINE ACCESS

A Marine Safety Zone could be active between 15:43 to 20:03 NZDT from the 27th March - 04th April, and 14:43 to 19:03 NZST from the 5th April - 10th April (due to NZ daylight savings time ending).

Vessels are not permitted in the safety zone at this time. Any vessels planning to cross the area indicated in the map are asked to contact Rocket Lab Range Control on VHF Channel 7 or Channel 16 at the earliest opportunity.

Check [www.rocketlab.co.nz/missions/next-mission](http://www.rocketlab.co.nz/missions/next-mission) to see if these zones are active, or Range Control on launch days via VHF Channel 7.

Launch related safety information is detailed in NZ Annual Notices to Mariners Ch 19.

The Marine Safety Zone is detailed in General NZ Notice to Mariners, Coastal Navigational Warnings and NAVAREA XIV Warnings.

Listen VHF Channel 79 for 24/7 up-to-date Range Information Broadcast.

### MARINE SAFETY ZONE COORDINATES

- A. 39°14.00' S 177°50.80' E (Blacks Reef)
- B. 39°14.00' S 177°54.00' E
- C. 39°17.00' S 177°59.90' E
- D. 39°40.00' S 177°50.50' E
- E. 39°40.00' S 177°43.00' E
- F. 39°14.50' S 177°48.50' E

## CONTACT ROCKET LAB

- For real time launch updates, follow Rocket Lab on Twitter @RocketLab
- Listen on VHF Ch 79 when on the water

- Call us on 0800 110 623.
- Visit our website for road, air and marine access information.  
[www.rocketlabusa.com/launch-info/launch-complex-1](http://www.rocketlabusa.com/launch-info/launch-complex-1)



## WHERE CAN I VIEW A LAUNCH FROM?

Wairoa District Council has allocated a public rocket launch viewing area near Nuhaka, accessible via Blucks Pit Road. Visit [www.visitwairoa.co.nz/welcome-to-wairoa/space-coast-new-zealand/](http://www.visitwairoa.co.nz/welcome-to-wairoa/space-coast-new-zealand/) for more information.

Scrubs and postponements are likely during launch windows, so visitors to the Blucks Pit viewing site should anticipate multiple postponements, sometimes across several days.

**Watch the livestream:**  
[www.rocketlabusa.com/live-stream](http://www.rocketlabusa.com/live-stream).

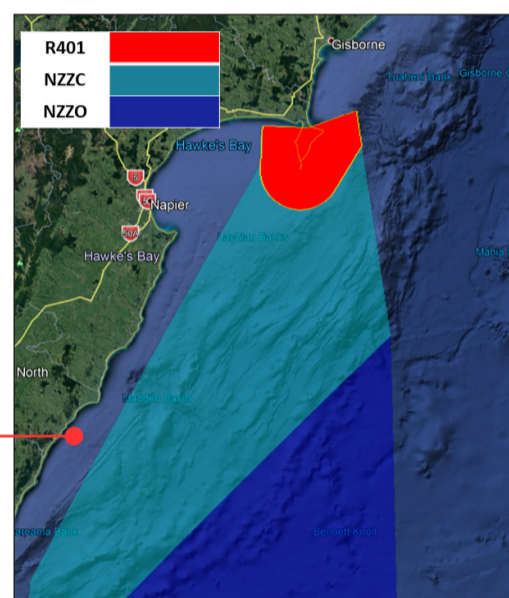


Figure 2



Figure 1

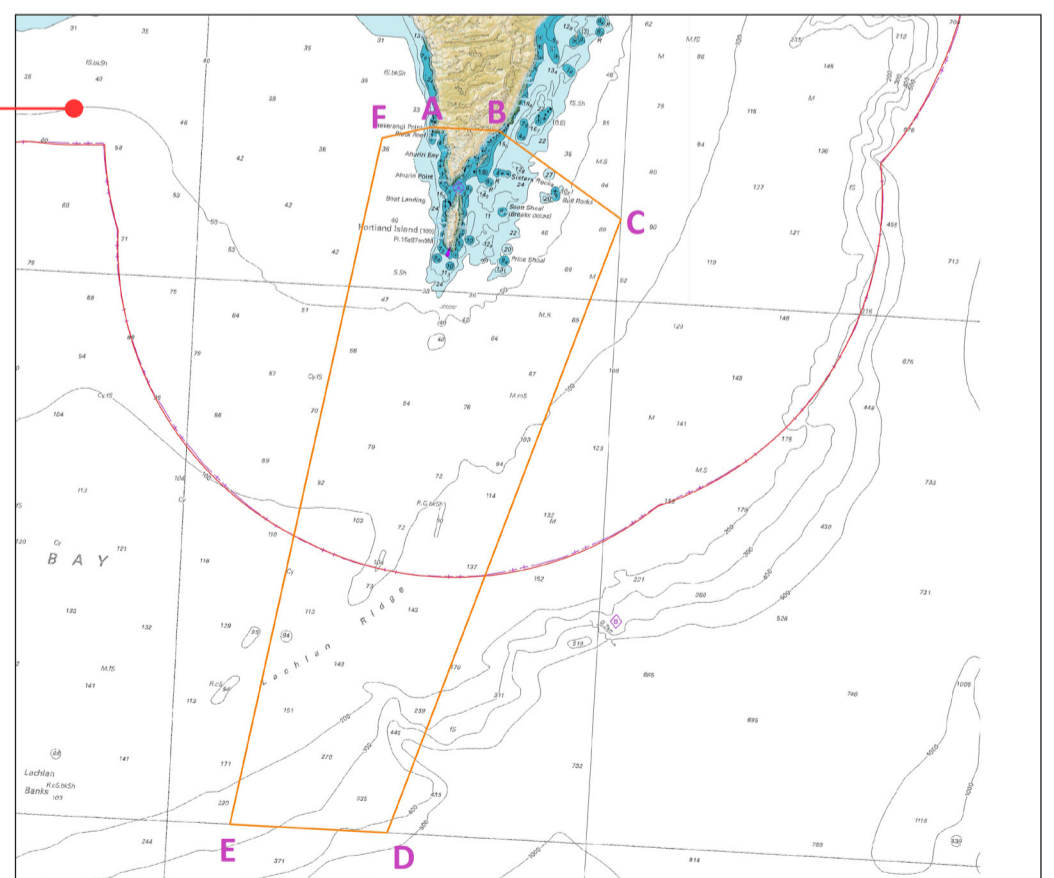


Figure 3